

Quatre Livre de Dancieries

Superius Part in Modern Clefs

Claude Gervaise (ca.1510 — after 1558)

01 Pavane 'La Venissienne'

Musical score for Pavane 'La Venissienne' in G minor, 4/4 time. The score consists of five staves of music. The first staff starts with a treble clef, a key signature of one flat, and a 4/4 time signature. The melody is written in a single line. The second staff begins at measure 6. The third staff begins at measure 14 and includes a key signature change to one sharp (F#) at the start of the measure. The fourth staff begins at measure 21. The fifth staff begins at measure 27 and ends with a double bar line and repeat sign.

02 Pavane

Musical score for Pavane in G minor, 4/4 time. The score consists of two staves of music. The first staff starts with a treble clef, a key signature of one flat, and a 4/4 time signature. The melody is written in a single line. The second staff begins at measure 9 and includes a key signature change to one sharp (F#) at the start of the measure. Both staves end with a double bar line and repeat sign.

02 Galliarde

Musical score for Galliarde in G minor, 3/4 time. The score consists of two staves of music. The first staff starts with a treble clef, a key signature of one flat, and a 3/4 time signature. The melody is written in a single line. The second staff begins at measure 9 and includes a key signature change to one sharp (F#) at the start of the measure. Both staves end with a double bar line and repeat sign.

03 Pavane

Musical score for Pavane in G minor, 4/4 time. The score consists of two staves of music. The first staff starts with a treble clef, a key signature of one flat, and a 4/4 time signature. The melody is written in a single line. The second staff begins at measure 9. Both staves end with a double bar line and repeat sign.

03 Galliarde

Musical score for Galliarde in G minor, 3/4 time. The score consists of three staves of music. The first staff starts with a treble clef, a key signature of one flat, and a 3/4 time signature. The melody is written in a single line. The second staff begins at measure 7. The third staff begins at measure 14 and includes a key signature change to one sharp (F#) at the start of the measure. All three staves end with a double bar line and repeat sign.

04 Pavane 'L'oeil pres et loing'

Musical score for Pavane 'L'oeil pres et loing' in G minor, 4/4 time. The score consists of one staff of music. The staff starts with a treble clef, a key signature of one flat, and a 4/4 time signature. The melody is written in a single line and ends with a double bar line and repeat sign.

2



04 Galliarde 'L'oeil pres et loing'



8



05 Pavane 'Qui Souhaitez'



6



11



05 Galliarde 'Qui Souhaitez'



6



11



06 Pavane



9



06 Galliarde



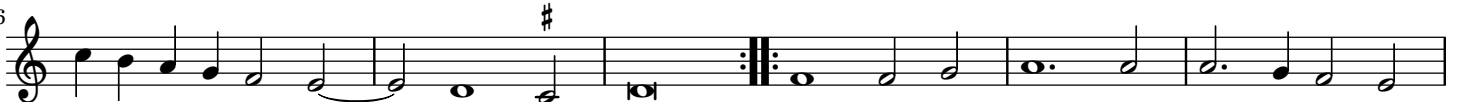
10



07 Pavane 'Vous Qui Voulez'



6



12

18

07 Galliarde 'Vous Qui Voulez'

9

08 Pavane 'Plus Revenir'

9

08 Galliarde 'Plus Revenir'

9

09 Pavane 'M'amey Est Tant Honneste et Saige'

9

09 Galliarde 'M'amey Est Tant Honneste et Saige'

9

10 Pavane 'O Foible Esprit'

9

17

4

11 Pavane 'Le Bon Vouloir'



7



13



19



12 Pavane



7



13 Pavane 'Pour Mon Plaisir'



7



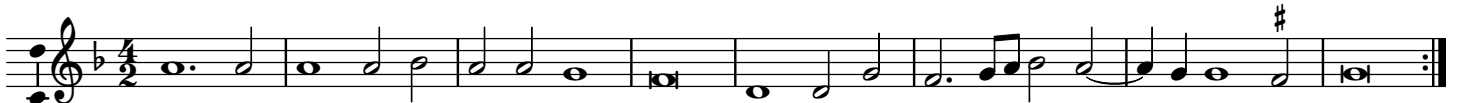
13



19



14 Pavane



9



17



15 Pavane



7



14



6

Musical staff 17, treble clef, 2/4 time signature. The piece is in G major, indicated by a sharp sign on the F line. The melody consists of eighth and quarter notes, ending with a double bar line and repeat dots.

21 Galliarde

Musical staff 21, treble clef, 3/4 time signature. The piece is in B-flat major, indicated by two flat signs (B-flat and E-flat). The melody consists of quarter and eighth notes, ending with a double bar line and repeat dots.

8

Musical staff 8, treble clef, 2/4 time signature. The piece is in G major, indicated by a sharp sign on the F line. The melody consists of quarter and eighth notes, ending with a double bar line and repeat dots.

15

Musical staff 15, treble clef, 2/4 time signature. The piece is in B-flat major, indicated by two flat signs (B-flat and E-flat). The melody consists of quarter and eighth notes, ending with a double bar line and repeat dots.

22 Galliarde

Musical staff 22, treble clef, 3/4 time signature. The piece is in B-flat major, indicated by two flat signs (B-flat and E-flat). The melody consists of quarter and eighth notes, ending with a double bar line and repeat dots.

9

Musical staff 9, treble clef, 2/4 time signature. The piece is in B-flat major, indicated by two flat signs (B-flat and E-flat). The melody consists of quarter and eighth notes, ending with a double bar line and repeat dots.

16

Musical staff 16, treble clef, 2/4 time signature. The piece is in B-flat major, indicated by two flat signs (B-flat and E-flat). The melody consists of quarter and eighth notes, ending with a double bar line and repeat dots.

23 Galliarde

Musical staff 23, treble clef, 3/4 time signature. The piece is in B-flat major, indicated by two flat signs (B-flat and E-flat). The melody consists of quarter and eighth notes, ending with a double bar line and repeat dots.

9

Musical staff 9, treble clef, 2/4 time signature. The piece is in B-flat major, indicated by two flat signs (B-flat and E-flat). The melody consists of quarter and eighth notes, ending with a double bar line and repeat dots.

17

Musical staff 17, treble clef, 2/4 time signature. The piece is in B-flat major, indicated by two flat signs (B-flat and E-flat). The melody consists of quarter and eighth notes, ending with a double bar line and repeat dots.

24 Galliarde

Musical staff 24, treble clef, 3/4 time signature. The piece is in G major, indicated by a sharp sign on the F line. The melody consists of quarter and eighth notes, ending with a double bar line and repeat dots.

7

Musical staff 7, treble clef, 2/4 time signature. The piece is in G major, indicated by a sharp sign on the F line. The melody consists of quarter and eighth notes, ending with a double bar line and repeat dots.

25 Galliarde

Musical staff 25, treble clef, 3/4 time signature. The piece is in B-flat major, indicated by two flat signs (B-flat and E-flat). The melody consists of quarter and eighth notes, ending with a double bar line and repeat dots.

8

Musical staff 8, treble clef, 2/4 time signature. The piece is in B-flat major, indicated by two flat signs (B-flat and E-flat). The melody consists of quarter and eighth notes, ending with a double bar line and repeat dots.

16

Musical staff 16, treble clef, 2/4 time signature. The piece is in G major, indicated by a sharp sign on the F line. The melody consists of quarter and eighth notes, ending with a double bar line and repeat dots.

26 Galliarde

Musical staff 26, treble clef, 3/4 time signature. The piece is in G major, indicated by a sharp sign on the F line. The melody consists of quarter and eighth notes, ending with a double bar line and repeat dots.

9 #

27 Galliarde

9

28 Galliarde

16 #

29 Galliarde

7

30 Galliarde

7 f

31 Galliarde

32 Galliarde

7

33 Galliarde

9 #

34 Galliarde

42 Galliard

The image shows a musical score for a piece titled "42 Galliard". It consists of two staves of music. The top staff is in treble clef, 3/2 time signature, and contains a melody with a sharp sign (#) above the eighth measure. The bottom staff is also in treble clef and contains a rhythmic accompaniment. Both staves feature repeat signs and double bar lines. The score is written in black ink on a white background.