

Quatre Livre de Dancieries

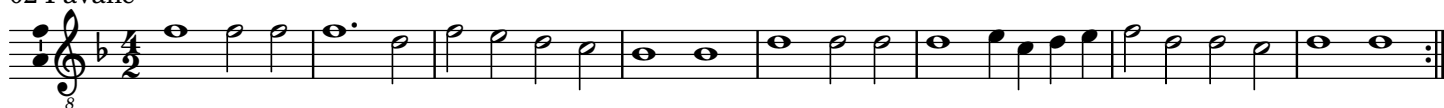
Contratenor Part in Modern Clefs

Claude Gervaise (ca.1510 — after 1558)

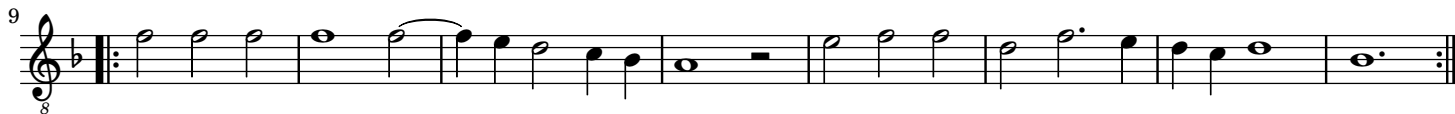
01 Pavane 'La Venissienne'



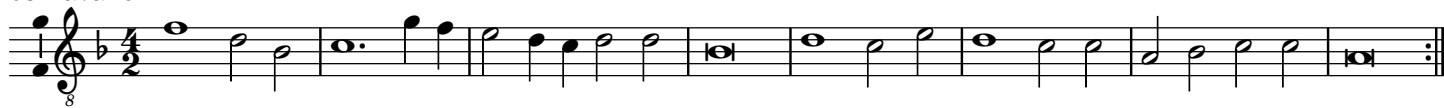
02 Pavane



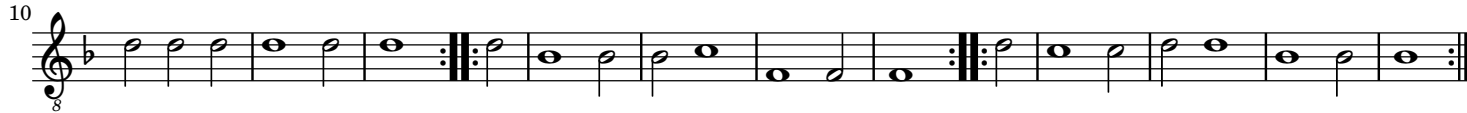
02 Galliarde



03 Pavane



03 Galliarde

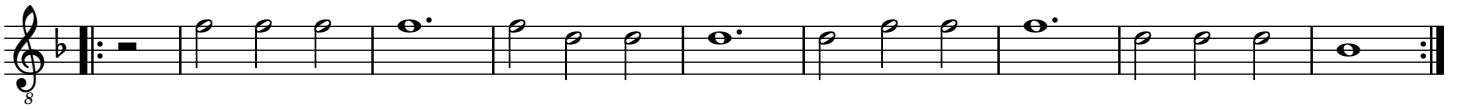


04 Pavane 'L'oeil pres et loing'

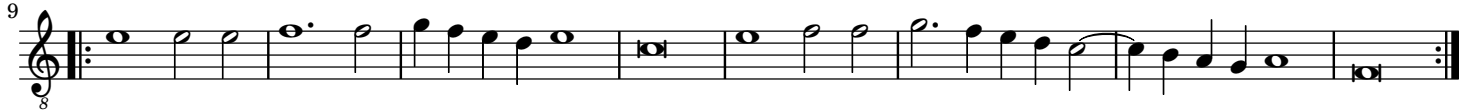


2

04 Galliarde 'L'oeil pres et loing'



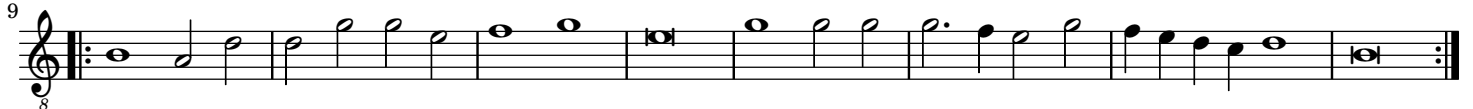
05 Pavane 'Qui Souhaitez'



05 Galliarde 'Qui Souhaitez'



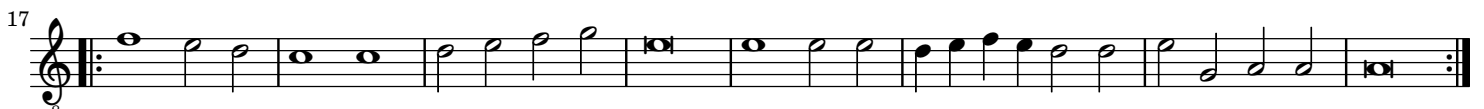
06 Pavane



06 Galliarde



07 Pavane 'Vous Qui Voulez'



07 Galliarde 'Vous Qui Voulez'



08 Pavane 'Plus Revenir'



08 Galliarde 'Plus Revenir'



09 Pavane 'M'ame Est Tant Honneste et Saige'



09 Galliarde 'M'ame Est Tant Honneste et Saige'



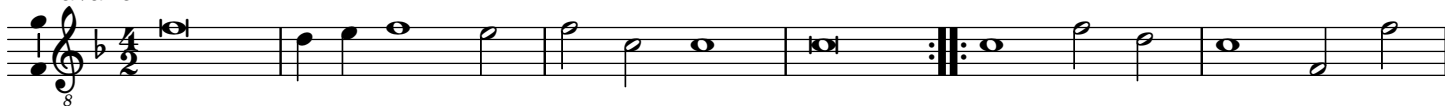
10 Pavane 'O Foible Esprit'



11 Pavane 'Le Bon Vouloir'



12 Pavane



4
7
8

13 Pavane 'Pour Mon Plaisir'

7
8

13
8

19
8

14 Pavane

9
8

17
8

15 Pavane

7
8

14
8

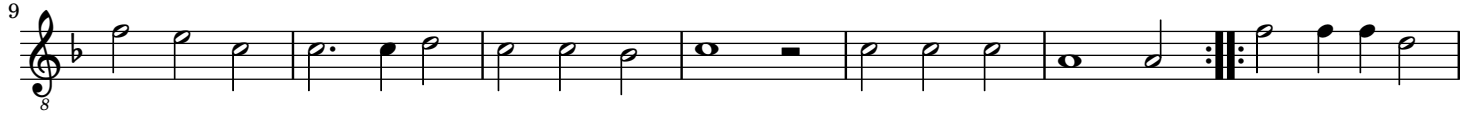
16 Pavane

9
8

16
8

17 Pavane

6
22 Galliarde



23 Galliarde



24 Galliarde



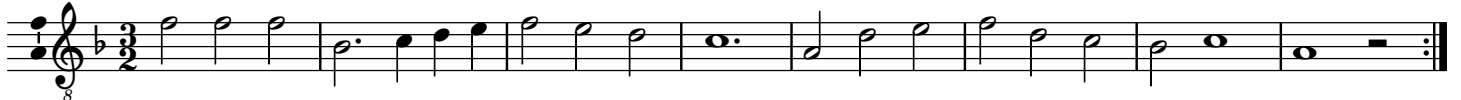
25 Galliarde



26 Galliarde



27 Galliarde



28 Galliarde

Musical notation for Galliarde 28, measures 1-16. The piece is in 3/8 time with a key signature of one flat. It consists of two staves. The first staff contains measures 1-16, and the second staff contains measures 17-32. The music features a mix of quarter and eighth notes, with repeat signs at the end of each staff.

17

29 Galliarde

Musical notation for Galliarde 29, measures 1-16. The piece is in 3/8 time with a key signature of one flat. It consists of two staves. The first staff contains measures 1-16, and the second staff contains measures 17-32. The music features a mix of quarter and eighth notes, with repeat signs at the end of each staff.

30 Galliarde

Musical notation for Galliarde 30, measures 1-16. The piece is in 3/8 time with a key signature of one flat. It consists of two staves. The first staff contains measures 1-16, and the second staff contains measures 17-32. The music features a mix of quarter and eighth notes, with repeat signs at the end of each staff.

31 Galliarde

Musical notation for Galliarde 31, measures 1-16. The piece is in 3/8 time with a key signature of one flat. It consists of two staves. The first staff contains measures 1-16, and the second staff contains measures 17-32. The music features a mix of quarter and eighth notes, with repeat signs at the end of each staff.

32 Galliarde

Musical notation for Galliarde 32, measures 1-16. The piece is in 3/8 time with a key signature of one flat. It consists of two staves. The first staff contains measures 1-16, and the second staff contains measures 17-32. The music features a mix of quarter and eighth notes, with repeat signs at the end of each staff.

33 Galliarde

Musical notation for Galliarde 33, measures 1-16. The piece is in 3/8 time with a key signature of one flat. It consists of two staves. The first staff contains measures 1-16, and the second staff contains measures 17-32. The music features a mix of quarter and eighth notes, with repeat signs at the end of each staff.

34 Galliarde

Musical notation for Galliarde 34, measures 1-16. The piece is in 3/8 time with a key signature of one flat. It consists of two staves. The first staff contains measures 1-16, and the second staff contains measures 17-32. The music features a mix of quarter and eighth notes, with repeat signs at the end of each staff.

35 Galliarde

Musical notation for Galliarde 35, measures 1-16. The piece is in 3/8 time with a key signature of one flat. It consists of two staves. The first staff contains measures 1-16, and the second staff contains measures 17-32. The music features a mix of quarter and eighth notes, with repeat signs at the end of each staff.

8



36 Galliarde



9



37 Galliarde



7



38 Galliarde



7



39 Galliarde



11



40 Galliarde



7



41 Galliard



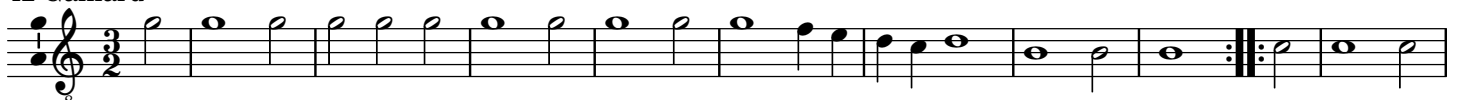
8



15



42 Galliard



10

